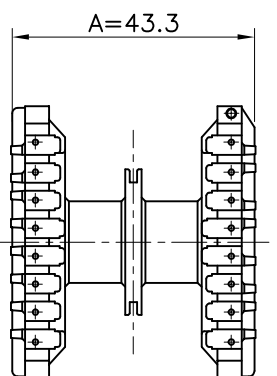
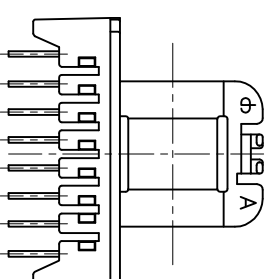
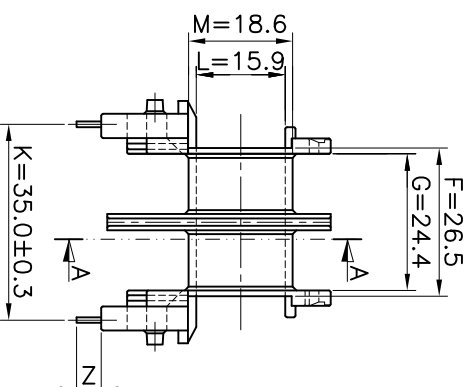



Technical drawing of a mechanical part, likely a valve or actuator, showing dimensions in millimeters. The drawing includes a side view and a top view. Key dimensions include:

- Overall height: $E = 26.0$
- Top flange diameter: $D = 14.6$
- Top flange thickness: $C = 12.7$
- Top flange width: $O = 18.5$
- Top flange height: $H = 41.0$
- Top flange thickness: $N = 15.5$
- Top flange width: $P = 5.36$
- Top flange thickness: $J = 5.0 \pm 0.3$
- Top flange width: $I = \varnothing 1.0 \pm 0.03$
- Top flange thickness: 5.36



△								
△								
△								
△								
△								
MARK	REVISION NOTE				DATE	DRAWN	CHECKED	APPROVED
DRAWN	CHECKED	APPROVED	MATERIAL : PHENOL	UL REC. : UL94V-0	THIRD ANGLE PROJ.	SCALE : 1/1		
Upo Soon, Moon	Chul, Park	Kwon Hee, Lee	Z : PIN LENGTH (According to customer's request)	DATE : 2006.08.11	TOLERANCE :±0.2 (Unless otherwise specified)	UNIT : m/m		
 주식회사 대흥보빈			TITLE		DWG NO		DH-041113-2067-03	
EE 42*15 (16P) "H" (2F) (A)								
DAE HEUNG BOBBIN CO., LTD								